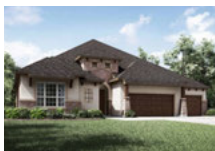




NEW INVENTORY HOMES!



**DRIPPING SPRINGS
CALITERRA**
190 Canal Drive
GRANTLEY E
MLS# 9937872
~~WAS \$1,370,900~~
NOW \$1,249,900



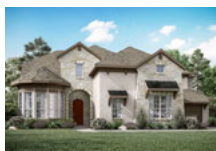
**DRIPPING SPRINGS
CALITERRA**
243 Bridge Water Loop
PALMETTO A
MLS# 1713909
~~WAS \$1,074,900~~
NOW \$999,900



**DRIPPING SPRINGS
CALITERRA**
257 Bridge Water Loop
BANCROFT B
MLS# 1426793
~~WAS \$1,199,900~~
NOW \$1,099,900



**LAGO VISTA
THE HOLLOWS**
7225 Destination Way
COLINAS II C
MLS# 4466980
~~WAS \$1,599,900~~
NOW \$1,299,900



**LIBERTY HILL
NORTHGATE RANCH**
105 Rickard Drive
KENWOOD D
MLS# 5791693
~~WAS \$1,374,900~~
NOW \$1,249,900



**SUMLIN
THE OAKS AT SAN GABRIEL**
125 Bull Ridge Trail
SUMLIN B
MLS# 4289506
~~WAS \$999,900~~
NOW \$849,900



**LAKEWAY
ROUGH HOLLOW**
418 Sittlington Lane
ROSEMEADE A
MLS# 4392791
~~WAS \$1,099,900~~
NOW \$849,900



**LAKEWAY
ROUGH HOLLOW**
514 Elworth Path
ROSEMEADE A
MLS# 6128515
~~WAS \$1,199,900~~
NOW \$899,900



**LEANDER
TRAVISSO**
3028 Soldato Way
MAXWELL B
MLS# 1390288
~~WAS \$2,249,900~~
NOW \$1,949,900



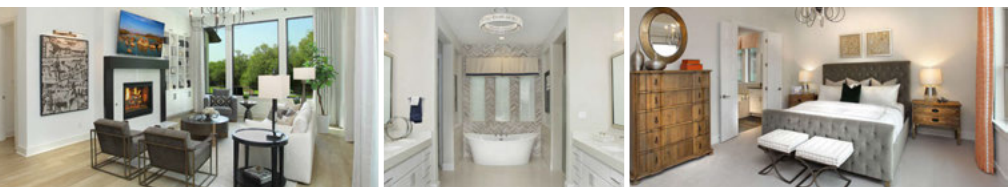
**GEORGETOWN
WOLF RANCH SOUTH FORK**
236 Running Fawn
OLYMPIA B
MLS# 7898912
~~WAS \$1,019,900~~
NOW \$899,900



**GEORGETOWN
WOLF RANCH**
129 Magnolia Spring Drive
BYRNLEE E
MLS# 6571834
~~WAS \$949,900~~
NOW \$699,900



**GEORGETOWN
WOLF RANCH SOUTH**
233 Running Fawn
AUBRIANNA A
MLS# 1720396
~~WAS \$849,900~~
NOW \$719,900



*Your 4% commission will apply on the base price of build-to-order homes. For inventory homes your commission will be 4% of the advertised price or contract price, whichever is lower. Commission will be paid to the registered Realtor at closing on Drees homes. Drees reserves the right to change or withdraw this program at any time without notice. For complete details see a Drees Market Manager.